

# Dates For Your Calendar

**Millthorpe Fire Fair:** 1 August 2025

**Spring into Art at Newbridge:** 18-19 October 2025

**Carcoar Show:** 25 October 2025

**Millthorpe Garden Ramble:** 1-2 November 2025

**Carcoar Cup Running Festival:** 2 November 2025

**Neville Show:** 8 November 2025

**Garage Sale Trail:** 8-9 & 15-16 November 2025

**Blayney Twilight Shopping:** 28 November 2025

**Millthorpe Markets:** 7 December 2025

**Millfest:** 7 February 2026

**Newbridge Swap Meet:** 15 February 2026

**Blayney Show:** 7 March 2026

**River Yarn Fibre Festival:** 4-5 April 2026

**Millthorpe Markets:** 5 April 2026

**Sculptures by the Bush:** April School Holidays

**Newbridge Winter Solstice:** 19-20 June 2026

*Some events are TBC, dates are based off previous years.*

Stay updated with other events in our region via our website, Facebook, monthly e-newsletter and the Village Voice.

If you are planning an event and would like to promote it through Council, or hosting an event on Council land and need to submit an application, visit our website for information: [blayney.nsw.gov.au/our-community/events](http://blayney.nsw.gov.au/our-community/events)

## Connect with Council

### How to report an issue to Council?

Council has an online Customer Request Form you can use to report any issues with Council assets such as footpaths, community facilities and roads. This can be found on the website homepage.

### Get updates

Scan the QR Code to sign up to our e-newsletter to receive important updates and stories from our community direct to your inbox.



### Blayney Shire Council

91 Adelaide Street, Blayney  
Monday – Friday: 9:30am–4pm.

### Blayney Library

**Monday, Tuesday, Thursday & Fridays:**  
11am–1pm & 2pm–5pm.

**Saturday:** 10am–12pm

**Closed:** Wednesdays, Sundays and Public Holidays.

### Blayney Waste Depot

**Monday-Friday:** 9am–5pm.

**Saturday:** 9am–12pm & 2pm–5pm.

**Sunday:** 9am–12pm & 2pm–5pm  
(Buyback shop is not open on Sundays).

**Closed:** Christmas & New Years Day, Good Friday and Easter Sunday.

## Council Meetings

### 4th Tuesday of every month

6pm – Blayney Shire Community Centre

*Did you know you can watch the meetings live on YouTube?*



# Annual Newsletter 2025/26

Photo by Bradley Bradley

**6368 2104**

**[council@blayney.nsw.gov.au](mailto:council@blayney.nsw.gov.au)**

**[blayney.nsw.gov.au](http://blayney.nsw.gov.au)**

**f Blayney Shire Council**

# What we've achieved in 2024/25

## Community Strategic Plan

In May 2025, Council endorsed the Blayney Shire Community Strategic Plan 2025 – 2035. This was endorsed following community engagement from November to April with a series of drop-in sessions, community surveys and public exhibition period.

The CSP has five key themes in which the community priorities and strategies are developed to address the needs of the community.

- **Leadership:** Prioritise transparency, financial sustainability and strong partnerships with and for our community
- **Community:** A connected, healthy and inclusive community
- **Infrastructure:** Infrastructure is resilient, fit for purpose and maintained to support our community
- **Economy:** A diverse, vibrant and sustainable economy
- **Natural & Built Environment:** Protecting our assets for future generations

## Millthorpe CBD

The Millthorpe CBD underwent an upgrade to enhance safety, accessibility, and amenity while preserving the village's heritage charm. This project delivered key infrastructure upgrades, improvement to stormwater management, and created a more pedestrian-friendly environment. The pedestrian friendly environment included the installation of pram ramps and blister crossings and reinstatement of bluestone kerb repairs. This project was stage 1 of Millthorpe Village Centre MasterPlan with future stages seeking appropriate funding sources.

## Road Upgrades and Works

### Road/Bridge Upgrades and Heavy Patching

- Hobbys Yards Road
- Forest Reefs Road
- Four Mile Creek Road: Swallow Creek Bridge
- Browns Creek Road
- Somers Place
- Belubula Way



### Footpath Projects

- Blayney – Plumb St and Palmer St Loop (from Piggot PI to Orange Road)
- Blayney – Renewal of Orange Road footpath from Binstead St to Palmer St



## Funding Programs

Council provided almost \$111k of funding to community groups through the Community Financial Assistance Program. Some of the highlights for this financial year include:

- Kitchen upgrade at Sunny Ridge Golf Club
- Lyndhurst Golf Club Facility Improvements
- Blayney Netball Padding and Scoring Device
- Newbridge Solstice Banners
- Dishwasher at Millthorpe CWA
- Dishwasher at Lyndhurst Soldiers Memorial Hall
- Banners for Millthorpe Markets
- Painting at Tallwood Hall

This program also provides annual recurrent funding for specific outgoings, including Council rates and charges, insurances, school activities, or the holding of a regular community event or cultural activity.

Council also provided \$10k of funding through the Tourism Development Program to:

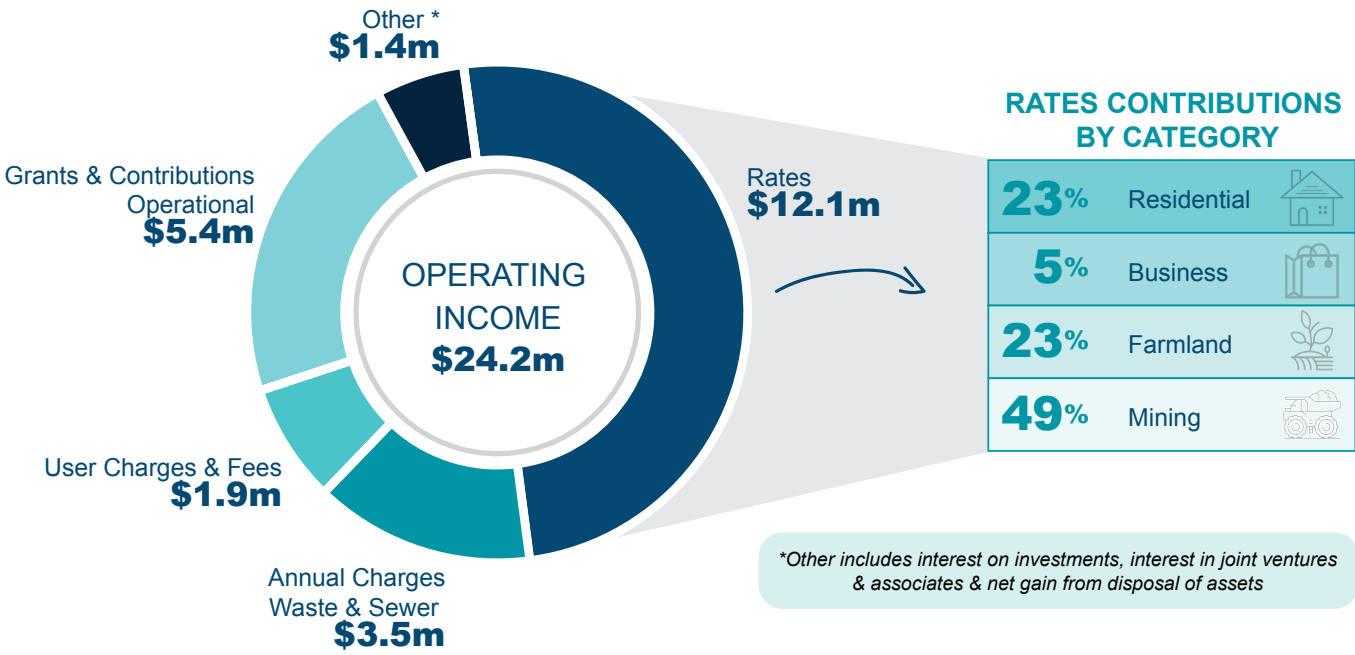
- Blayney Show
- Falling for Blayney – FOOD Week Event
- Lyndhurst Country Community Fair
- Newbridge Winter Solstice
- River Yarn Fibre Festival



# 2025/26 Operational Plan Snapshot

The Operational Plan sets out Blayney Shire Council's objectives for the coming year, and the resources and activities required to achieve our goals. This summary provides a snapshot of projected; income, operational and capital expenditure, and key projects for the next financial year.

## Operating Income



## Stay up to date with Council Projects

Our current projects page has a list of the key projects happening within the Shire.

Scan here for updates ►



## Trainees, Cadet and Apprentice Positions

Council was approved for funding in 2025/26 from the NSW Government to directly employ four new positions aimed at school leavers. These positions allow employees to get on the job training whilst gaining formal qualifications.

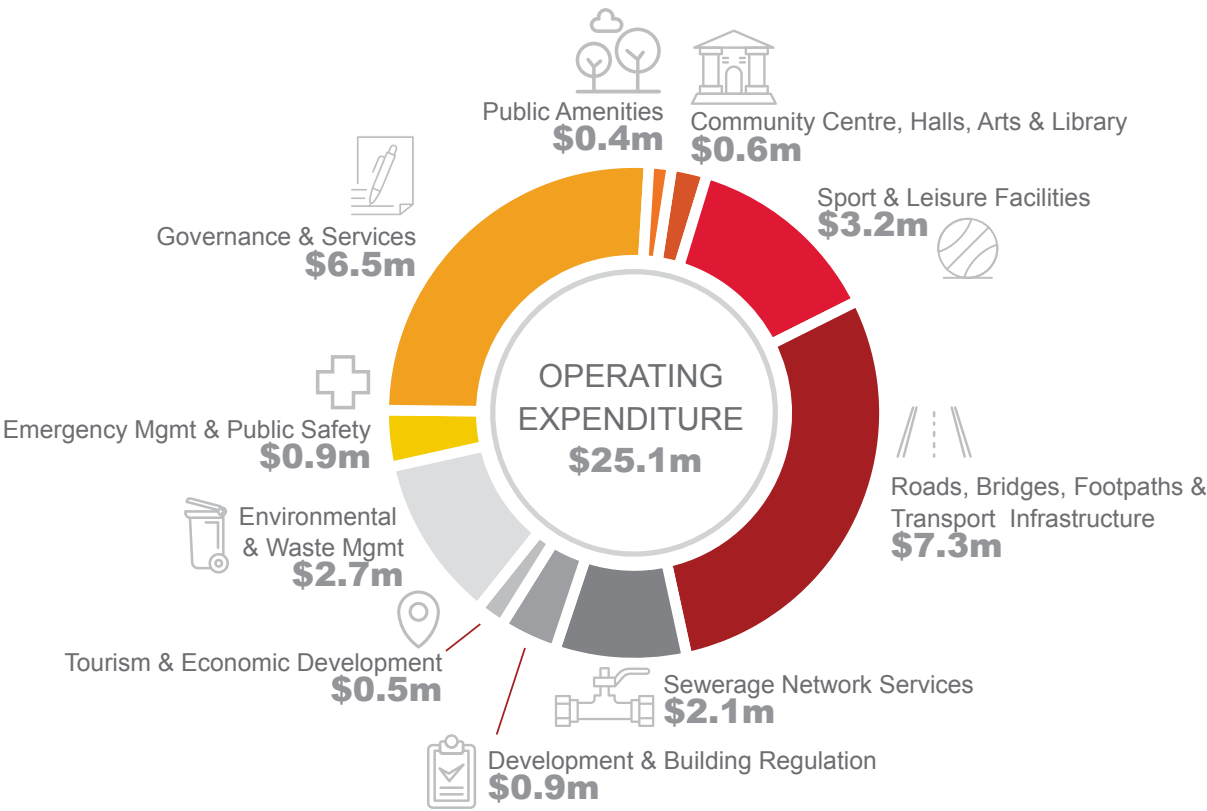
Blayney Shire Council is benefiting from the NSW Government's \$252.2 million investment, which is creating 1,300 new roles in local government across the state. The program addresses workforce shortages and skills gaps by funding 100% of wages for new apprentices, trainees, and cadets in high-demand fields. It also supports young people to train and build careers locally, strengthening community and workforce sustainability.

These positions are a mix of indoor and outdoor staff with applications open now and closing mid-August.

Scan the QR code to read more and apply ►



## Operating Expenditure



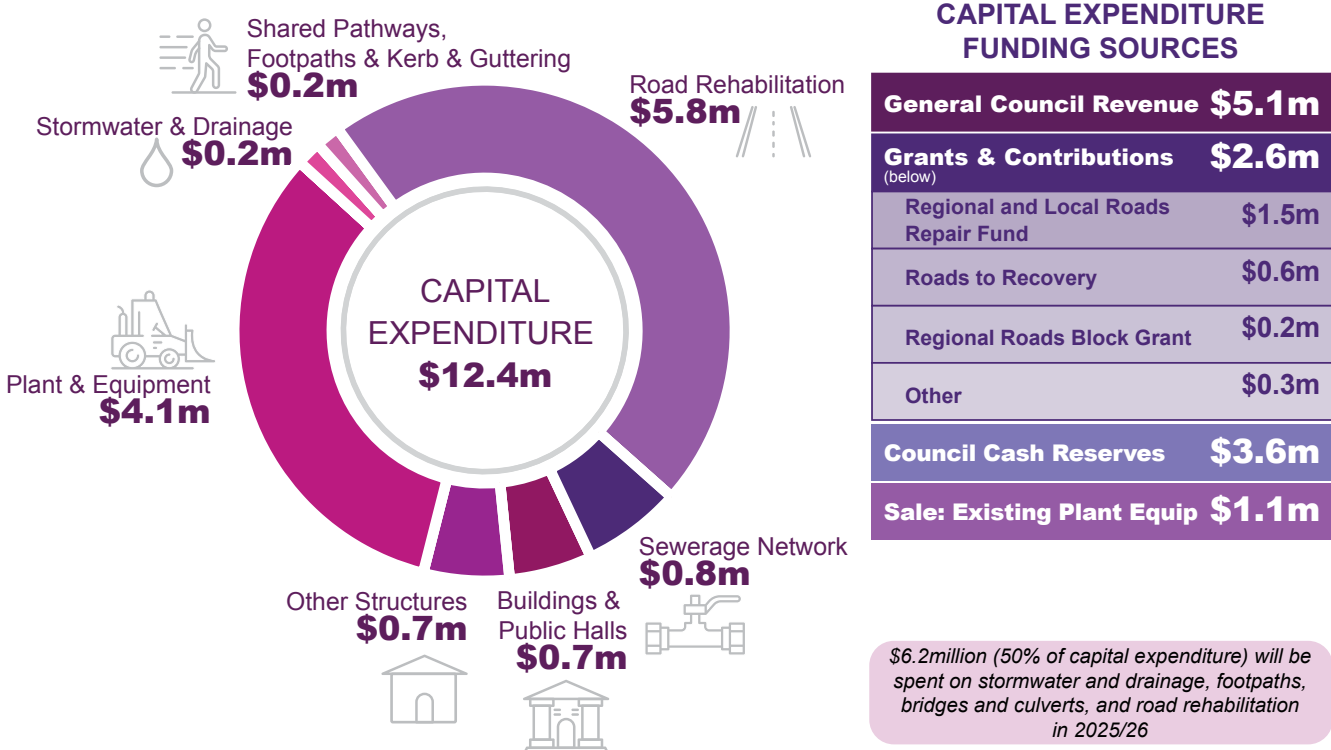
## What is Operating Expenditure vs Capital Expenditure?

Operating expenditure (OPEX) refers to the recurrent or day-to-day costs of running council services, such as contractors, materials, employment costs, contributions to other levels of government and other organisations, insurance, utility bills, depreciation and administration.

Capital expenditure (CAPEX) involves spending on assets that provide long-term benefits, like building roads, upgrading parks and buildings, or purchasing plant and equipment.

While OPEX keeps services running, CAPEX invests in assets, infrastructure and facilities that support the community over time.

## Capital Expenditure Program



## Project Highlights

### BUILDINGS

Works Depot	\$0.3m
-------------	--------

### ROADS

Garland Rd	\$0.8m
Tallwood Rd	\$1.6m
Forest Reefs Rd	\$0.8m
Hobbys Yards Rd	\$0.4m
Heavy Patching, Gravel Resheeting & Reseals	\$2.2m

### FOOTPATHS & SHARED PATHWAYS

Footpath Renewals	\$0.2m
-------------------	--------

### OTHER STRUCTURES

Waste Facility – Leachate Collection	\$0.4m
--------------------------------------	--------

### SEWER NETWORK

Replacement/Lining Sewer Mains	\$0.2m
Electrical Replacements	\$0.2m
Treatment Plant Renewals	\$0.3m

Read more on the Current Projects section of the Council website which includes the funding sources, project scope and timelines for the above works.